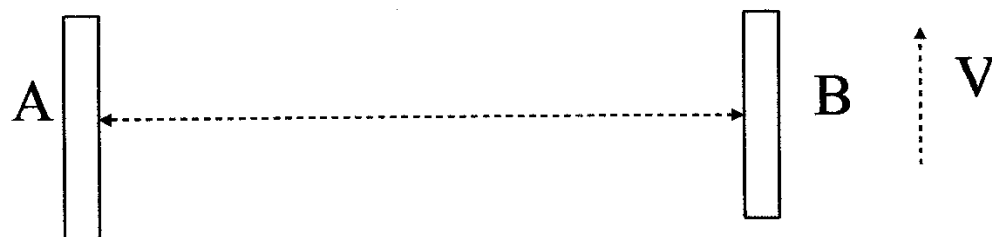


Mirror A is stationary with respect to B. A and B remain parallel regardless of the motion of B. A emits a laser beam that bounces back and forth between them. Both have a detector that can measure the frequency of the beam. B measures a red shift and A measures a red shift because the distance between them is increasing. Nothing new so far.



In the drawing below with A as the center and B rotating around A, will B measure the beam as blue shifted and A measure it as red shifted?

Mirrors A and B attached by brackets

